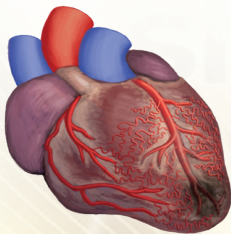
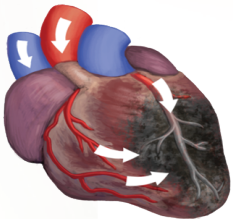


# SOULAIRE CIRCULATION™

## EFFECT ON HEART DISEASE

*Before Soulaire*



*After Soulaire*

Soulaire Circulation is clinically proven to improve the functions and actions of the heart. The squeezing mechanism of Soulaire Circulation increases sheer force of reversed blood flow to the heart muscle and the nervous system of the heart, creating an environment in your body that:

- Helps secretes vascular endothelial growth factor (VEGF), a hormone that stimulates the growth of new arteries called collaterals, creating a natural bypass. This natural occurrence helps reduce symptoms of angina i.e. chest discomfort/ shortness of breath
- Balancing the Autonomic Nervous System (nervous system in the heart) by strengthening the Vagus Tone
- Activates Stem Cells to regrow damaged tissues of the heart muscle due to ischemic heart disease (heart attack). This process reverses the damaged cells from the heart attack

Promotes VEGF Hormone Secretion: Vascular Endothelial Growth Factors

- Growth of New Arteries ( new collaterals )
- Keeps Collateral Circulation Open
- Reverses Capillary Dysfunction
- Improves Micro-Circulation

