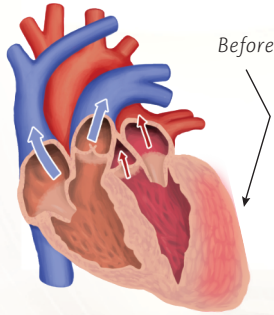


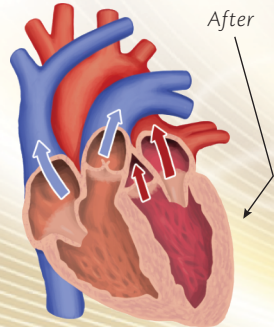
OUR SIGNATURE EECP® METHOD

EFFECT ON CONGESTIVE HEART FAILURE



EECP® has been shown to improve Congestive Heart Failure. Congestive Heart Failure is the inability for the heart to pump enough blood to the rest of the body. The squeezing mechanism of EECP acts as a second heart pumping blood upward from your calves, thighs and buttocks, towards the heart when the heart is at rest to:

- Circulate oxygenated blood through the coronary arteries to feed the heart muscle which strengthens and rejuvenates heart tissue
- Clinical studies prove that EECP helps reduce the workload on the heart by increasing massive blood flow to the heart muscle while it is at rest and moving blood around the body to deliver enough oxygen and nourishment to all organs
- EECP restores function to the mitochondria, where energy is made across every of your 37.2 trillion cells. This allows cellular division and stem cell activation to increase
- A significant study to evaluate EECP treatment in people with congestive heart failure (the PEECH Trial) showed that EECP improved exercise duration, symptoms and quality of life in patients with heart failure



Soulaire Wellness Company does not provide any medical advice or services. EECP is not intended to diagnose, treat or cure any disease. Please consult your healthcare provider if you have any medical issues. EECP is a registered trademark of Vasomedical, Inc. Soulaire is a registered trademark of Soulaire Inc.

©2024 All Rights Reserved • Information herein is the sole intellectual property of Soulaire Corporation • SOULAIREWELLNESS.COM